

SonoScape

E3

A brand new portable ultrasound system E3, brings you a distinct experience with SonoScape's traditional imaging technologies.

E3's accurate B mode and sensitive color signal give crisp, detailed images to improve your scanning experience while increasing your diagnostic confidence.



Excellent Image Quality as Always

C-Field Beam

The continuously dynamic focus provides more energy which contributes to higher contrast resolution, signal-noise ratio and uniformity in the image.

μ -Scan

The latest generation of μ -Scan imaging greatly enhances the image by reducing noise, improving signal strength and improving visualization.

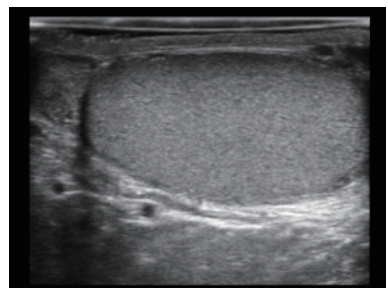
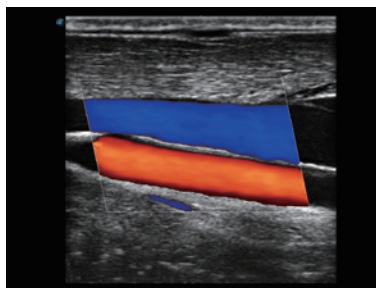
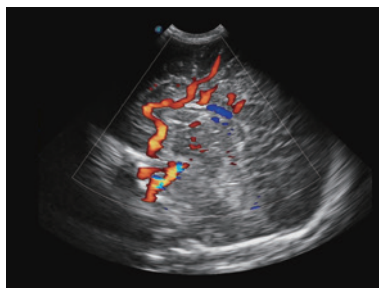
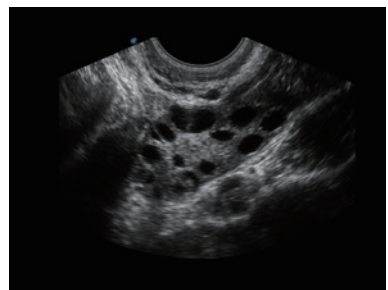
Dynamic Color

With Dynamic Color the sonographers can easily see in detail very small veins and slower velocities for the detailed blood flow information of the patient.

Tissue Specific Imaging

The system detects different tissues automatically by matching different acoustic ranges, from which the user can then acquire images with more uniformity and higher spatial resolution.

Wide Range of Probes and Applications



SonoScape

SonoScape Medical Corp.

2F, 12th Building, Shenzhen Software Park Phase II, Keji Middle 2nd
Road, Nanshan District, Shenzhen 518057, Guangdong, China
Tel: +86-755-26722890 Fax: +86-755-26722850
Email: market@sonoscape.net www.sonoscape.com